

Persuasive Writing Rainforests

Year 4 English – Lesson 4

Thursday 21st January

Rainforests

Today we are going to learn about the vast deforestation taking place in rainforests and the effects this is having on our world..



Watch the BBC news report on deforestation.

<https://www.youtube.com/watch?v=nYInoxgqEWo>

Think about the effects on wildlife and their habitats. Think about the effect on Global warming and the environment.



The Danger of
Deforestation

Think about It

What do you think about when you look at these pictures?

Paper
aeroplanes?

Books?

Bow and
arrow?

Furniture?

Firewood?

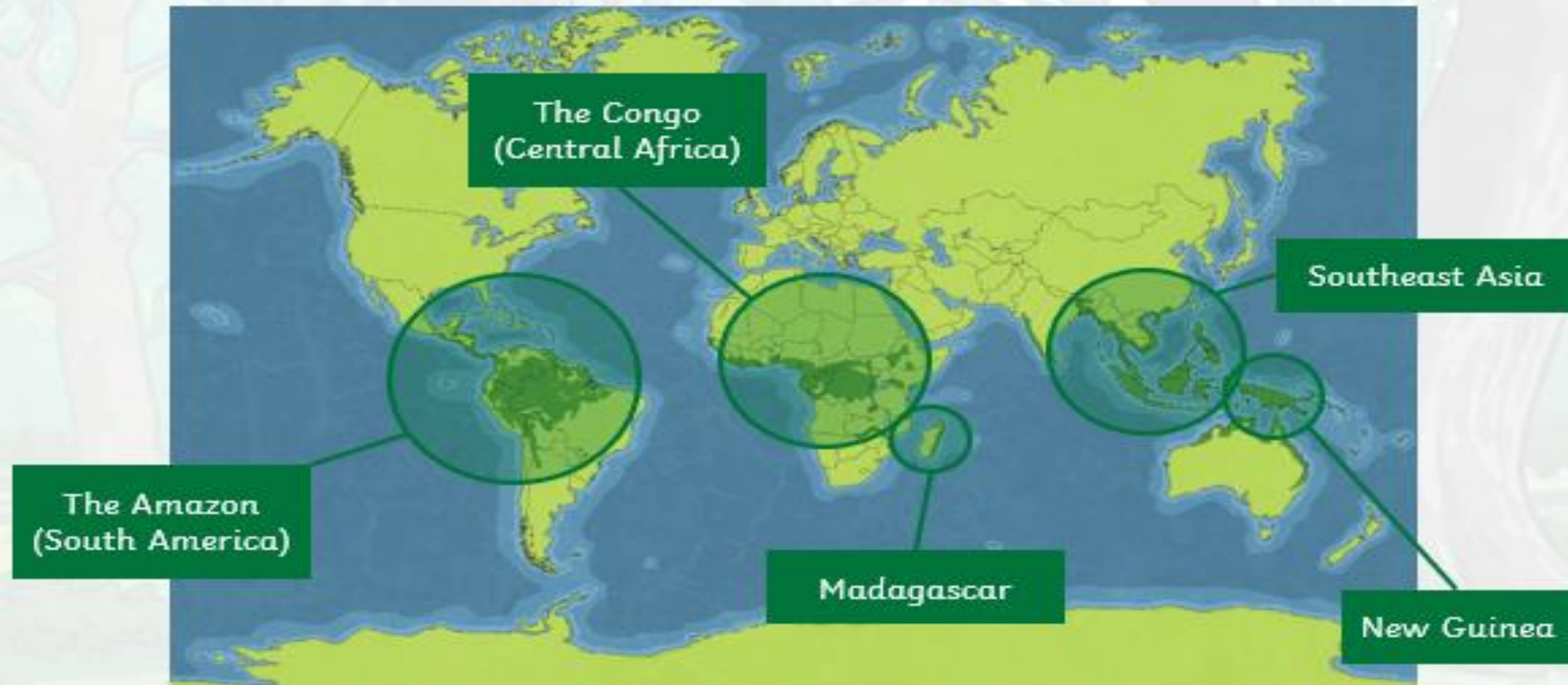


What about a tree or perhaps a forest?



Forest Fact

Around 30% of the Earth is covered by trees.



Why Are Rainforests so Important?

Rainforests cover only 6% of the Earth but they are home to 50% of all plant and animal species. In just four square miles you might find:

1,500 flowering plants



400 species of birds



750 species of trees



150 species of butterflies



And much more!



Why Are Rainforests so Important?

Rainforests are often known as the 'lungs of the Earth'. The trees **absorb harmful carbon dioxide** and **produce 20% of the oxygen** in Earth's atmosphere!

We need to breathe in oxygen but too much carbon dioxide causes climate change so the trees absorbing it helps save the planet! Cutting down trees will speed up the damage being done by climate change!



Why Are Rainforests so Important?

25% of medicines come from plants in the rainforest.



Rainforests get their name from the heavy rainfall. Trees soak up the water and help prevent erosion. Without them the soil will just wash away.



What Is Deforestation?

Deforestation occurs when trees are cut down across a wide area which is then permanently cleared for another use.



Did You Know...?

Every minute, an area of rainforest the size of a football pitch is cut down. If this rate continues, there will be no rainforests in 100 years.

Why Are the Rainforests Cut Down?



Trees are useful and valuable. Among other things, they are used for paper, building and firewood.



The rainforest is home to a unique variety of tree species. Hardwoods such as teak or mahogany are strong and so are perfect for building and for making furniture. However, these trees are slow growing and are not easy to replace.



There are over 7 billion people on the planet.
This number keeps growing.
By 2100, there could be 11.2 billion people!



All of these people need food so land is
cleared for farming.



Subsistence Farming

Known as slash and burn, families cut down small parts of the forest and burn it to improve the soil and make room for cattle.

It is small scale and the forest can regenerate. But with more people taking more land, this chance of recovery is slower. Up to 48% of all deforestation is caused by subsistence farming.



Commercial Farming

This is farming that happens on a large scale. It is led by companies who need to produce on a much bigger scale to provide food and products for the wider world.

Forest is cleared permanently for:

- **Cattle grazing:** this provides meat for restaurant chains and supermarkets.
- **Crops:** such as sugar cane and palm oil.

What Are the Effects of Deforestation?

Soil Erosion

Tree roots help hold soil in place. Without them, soil is washed into rivers, blocking them, contaminating them and causing flooding.

Habitat Loss

Animals and plants lose their homes and may become endangered or extinct!

Lack of Biodiversity

The number of different species becomes smaller.

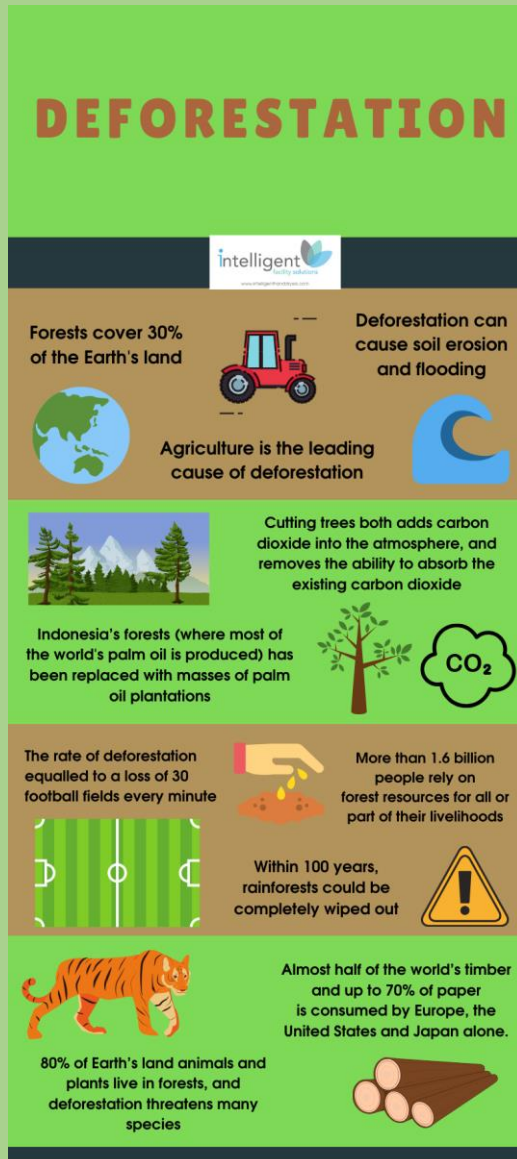
Droughts

Trees are an important part of the water cycle, without them there will be a lack of rain.

Climate Change

Scientists believe deforestation has a big effect on climate. Trees store carbon dioxide so when they are cut down, the carbon dioxide builds up in the atmosphere. This is known as the 'greenhouse effect' and causes global warming.

Example of a leaflet



Task: You are going to design and create a leaflet telling people about the threat rainforests are under.

Use the notes you have made over the past two days to help you.

Try to include:

- start by explaining why rainforests are important
- Tell the reader about what is happening to rainforests and why
- Finish by explaining how this could effect us and the planet.

Remember you want people to pick up your leaflet and read it! Make it eye-catching. Use pictures, labelled diagrams, headings, sub-headings and information boxes.

Well Done Year 4!



Tomorrow we are going to write a letter to the queen to persuade her to stop deforestation.

